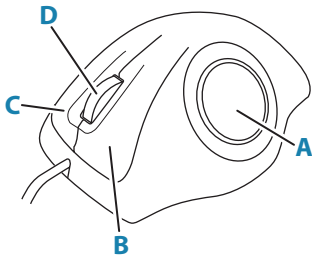


O5000 trackball keys



The optical trackball (A) is used for positioning the cursor.

The other trackball keys have different functionality depending on cursor position on the radar panel.

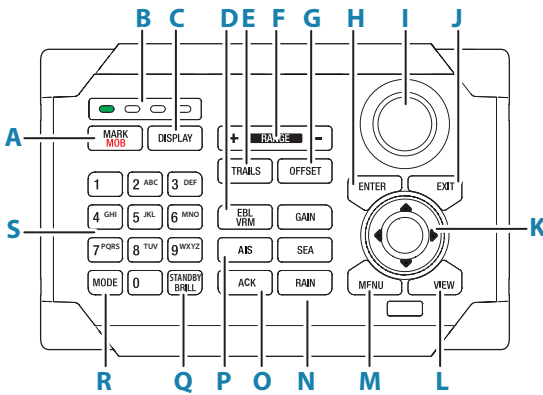
The table lists the key functions relative to what part of the radar panel that is under the cursor.

→ **Note:** The cursor must be located over an open menu or over the quick access pop-up to be able to use the scroll function.

Cursor over...	Left key (B)	Right key (C)	Scroll wheel (D)
Menu	Select	Return to previous menu level	<ul style="list-style-type: none"> Rotate to scroll menu options Press to select
Quick access button	Select	Display selected button's pop-up	<ul style="list-style-type: none"> Rotate to scroll pop-up options
AIS target	Activate/deactivate	Display target menu	No action
Radar target	Acquire target		

O2000 front controls

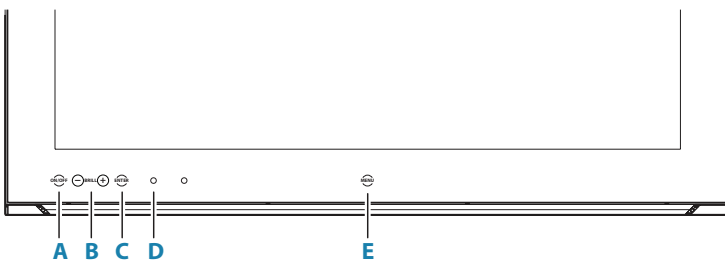
→ **Note:** The O2000 can be used with different equipment. Keys labelled with an asterisk (*) are not used for the R5000.



A	Mark/MOB key *
B	Unit under command LEDs *
C	Display key*
D	EBL/VRM key
E	Trails key
F	Range key
G	Offset key
H	Enter key
I	Rotary knob
J	Exit key


K	Arrow keys
L	View key
M	Menu key
N	GAIN, SEA and RAIN keys
O	Acknowledge key
P	AIS key
Q	Standby/Brilliance key
R	Mode key *
S	Alpha numeric keypad

M5000 monitor keys



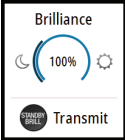
A	Power key
B	Brilliance adjustment key
C	Enter key
D	Red LED
E	Menu key

Turning the system ON and OFF

	<p>Press the standby/brilliance key to turn the system ON. The system remains ON as long as power is connected.</p>
	<p>Press and hold the key to turn the R5000 radar processor and the monitor to standby mode.</p>

Adjusting the brilliance

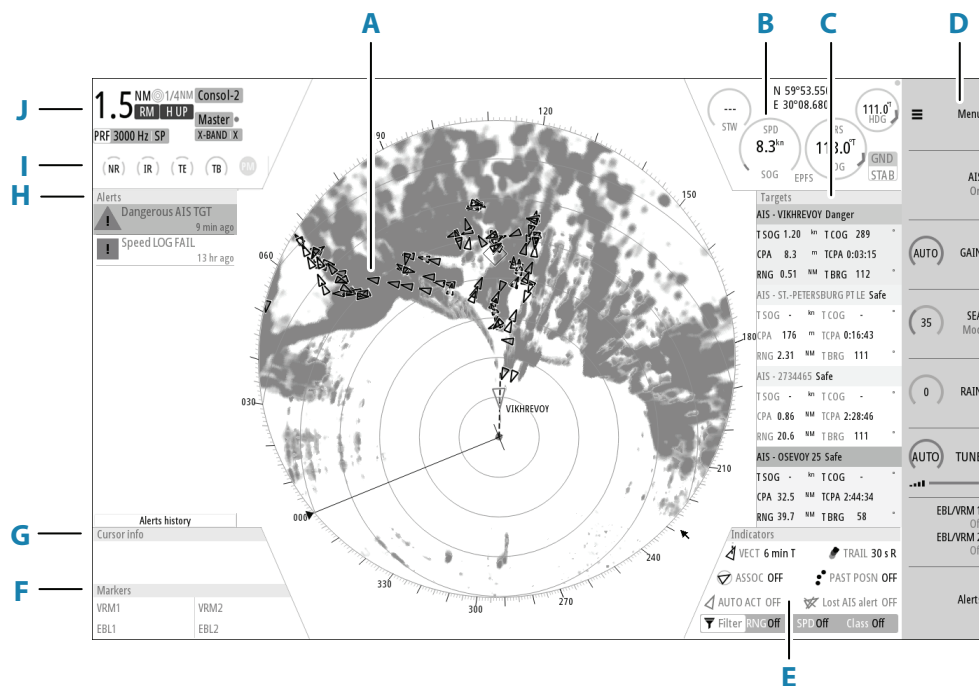
Press the standby/brilliance key to display the brilliance pop-up. With the pop-up open:

	<ul style="list-style-type: none"> adjust the display brilliance by turning the rotary knob switch between day and night palette by pressing the left (40%) or right (100%) arrow keys. 	<p>Close the pop-up by:</p> <ul style="list-style-type: none"> pressing the exit key right-clicking the mouse when the cursor is over the pop-up
--	---	--

Switching between transmit and standby

Display the brilliance pop-up by pressing the standby/brilliance key, then repeat short presses on the key to switch between standby and transmit mode.

The main panel



A	Plan Position Indicator (PPI)
B	Own ship information
C	Target panel
D	Quick access buttons
E	Target indicators

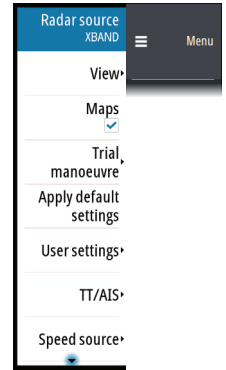
F	Markers
G	Cursor information
H	Alerts panel
I	Signal indicators
J	System information

Menus

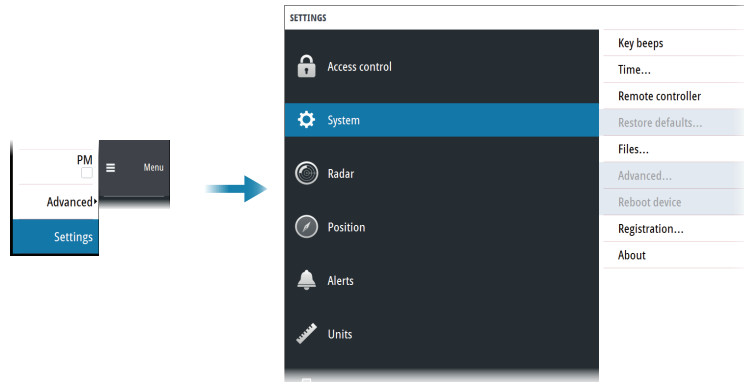
Main menu and submenus

Access the main menu by pressing the menu key on O2000, or by selecting the quick access menu button.

- Use the up and down arrow keys, turn the rotary knob, or scroll with the mouse to move up and down in a menu
- Press the enter key, the right arrow key or the rotary knob to access a sub menu, to toggle options or to confirm a selection
- Press the exit key or the left arrow key to return to previous menu level and then exit the menu system



Settings menu



Quick access buttons

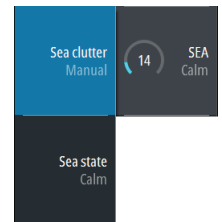
Activate a quick access buttons by pressing the dedicated key on O2000, or by using the mouse to select the button.

To display the pop-up:

- double-press the dedicated key on O2000
- press the right mouse key when the cursor is over a selected quick access button

To remove the pop-up and revert to the button's main function:

- press the exit key on O2000
- press the left mouse key when the cursor is outside the pop-up
- press the right mouse key when the cursor is over the pop-up



Using the cursor

Activate cursor by:

- pressing one of the arrow keys
- use the mouse to position the pointer inside the PPI area

Deactivate cursor by:

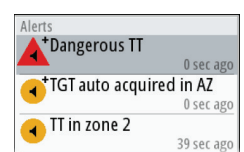
- pressing the exit key
- use the mouse to position the pointer outside the PPI area

➔ **Note:** The cursor cannot be activated, deactivated or moved when a menu or a settings dialog is open.

Acknowledging alerts

To acknowledge the most recent alert:

- press the acknowledge key on O2000, or mouse click on the alert line in the alerts panel



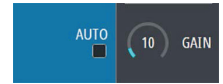
Adjusting the radar image

Gain

The gain controls the sensitivity. The more you increase the gain, the more details are shown on the image.

To adjust the gain:

- Press the gain key to activate the function, then turn the rotary knob to manually adjust the setting
- Press and hold the key to turn on/off the automatic option
- Press the key twice to display the pop-up

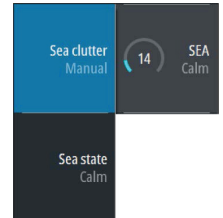


Sea anti-clutter

The Sea anti-clutter option is used to filter the effect of random echo returns from waves or rough water near the vessel.

To adjust the sea anti-clutter:

- press the sea key to activate the function, then turn the rotary knob to manually adjust the setting
- press and hold the key to turn on/off the automatic option
- press the key twice to display the pop-up

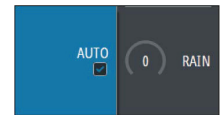


Rain anti-clutter

Used to reduce the effect of rain, snow or other weather conditions on the radar image.

To adjust the rain anti-clutter:

- press the rain key on O2000 to activate the function, then turn the rotary knob to adjust the setting
- press and hold the key to turn on/off the automatic option

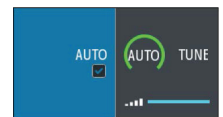


Tuning the radar sensor

Tune the radar receiver to show maximum target returns on the screen.

The O2000 remote controller has no dedicated tune key. Adjust the tuning by using the mouse, or by using a combination of the mouse and the remote controller:

- select the tune quick access key to activate the function, then use the scroll wheel or the rotary knob to manually adjust the setting
- press the left mouse key twice to turn on/off the automatic option, or press the right mouse key to display the pop-up and select the automatic option



Targets

Automatically acquire radar targets and activate AIS targets

The tracking zone function allows for automatic acquisition of radar and AIS targets when they enter a user defined zone ahead or around your vessel.

Two tracking zones can be defined, each with individual settings.

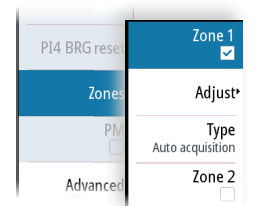
Manually acquire radar targets and activate AIS targets

When the cursor is active, you can immediately acquire a radar target at the cursor position by:

- pressing the enter key
- pressing the left mouse button

You can also acquire a target from the target menu. Display the menu by:

- pressing and holding the enter key
- pressing the right cursor button



Cancelling a target

Deselect a target and remove the detailed target information by selecting the cancel target option in the target menu.

